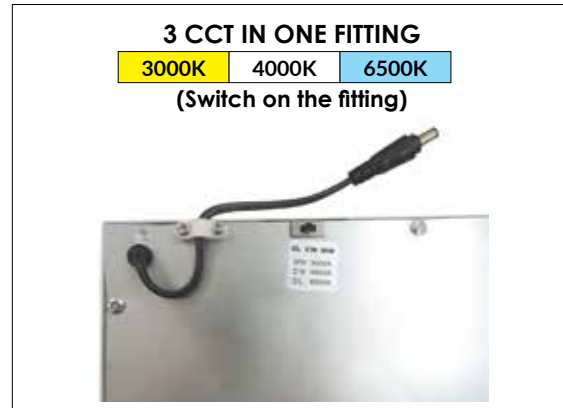




Panels

PANELM

- Interior LED Tri-CCT panel lights
- Input voltage: 220~240V AC 50/60Hz
- Material: aluminium, PMMA & PS
- LED chips: SMD2835 LED
- White trim/ frame
- Power factor: 0.9
- CCT changeable: 3000K/ 4000K/ 6500K
- Flex & plug with male joiner included (L: 1200mm)
- External driver with female joiner
- Driver dimensions: (L140 x W 40.5 x D 30mm)
- Distance lead to driver: 1220mm
- Driver to panel: 300mm
- Ambient temp: -20 to +40°C
- Suitable for 2-way switching
- Suitable for use with PIR & microwave sensors
- **PANELM01-03: IPART & VEET approved**
- **Can be converted to dimmable when used with dimmable driver (SOLD separately)**



**PANELM01-03:
IPART & VEET
APPROVED**



TBAR replacement LED panel lights, a widely used product for illuminating and decorating commercial premises, homes, offices, meeting rooms, libraries, hotels, restaurants, hospitals, schools, etc.

LED panel lights can be surface mounted on plaster or solid ceiling by using PANELFR range. WARRANTY VOIDED if product drilled directly into any surface.

| Part No. | Description | Kelvin | Lumens | Watt | CRI | Dimensions | Carton QTY |
|----------|---|-------------------|--------------------|------|-----|----------------|------------|
| PANELM01 | PANEL LED TBAR WH Multi / Tri colour 595mmX595mm | 3000/ 4000/ 6500K | 2900/ 3100/ 3000lm | 36W | 80 | 595x595x9.2mm | 1/4 |
| PANELM02 | PANEL LED TBAR WH Multi / Tri colour 295mmX1195mm | 3000/ 4000/ 6500K | 2900/ 3100/ 3000lm | 36W | 80 | 295x1195x9.2mm | 1/4 |
| PANELM03 | PANEL LED TBAR WH Multi / Tri colour 595mm X 1195mm | 3000/4000/ 6500K | 4800/ 5100/ 5000K | 60W | 80 | 595x1195x9.2mm | 1/1 |
| PANELM04 | PANEL LED TBAR WH Multi / Tri colour 595mm X 295mm | 3000/ 4000/ 6500K | 1500/ 1600/ 1550K | 18W | 80 | 595x295x9.2mm | 1/8 |

Dimmable LED Drivers for PANELM

- Input voltage: 200-240V AC 50/60Hz
- Output voltage: 30-42V DC
- Ambient temp: -10 to 40°C
- Life time: 30,000hrs
- IP20 for indoor use only
- Suitable for 2-way switching
- Suitable for use with PIR sensor



CM-24VAADR



CM-40VADDR, CM-60VATDR

Tested & Recommended Dimmers:

| Brand | Part No. | Max.Panels (Drivers) per Dimmer | | |
|---------|--|---------------------------------|----------|----------|
| | | PANELM01-02 | PANELM03 | PANELM04 |
| CLIPSAL | 32ELEDM,32E450UDM, 31E2PUDM, 32E450LM | 2PCS | 1PC | 5PCS |
| HPM | CAT250, CAT250L, CAT250T, CAT400T | | | |
| CLA | LYNX, VELA | | | |
| LEGRAND | Cat AR400A3PM | | | |

| Part No. | Description | Output Current | Watt | Load | Carton QTY |
|------------|--|----------------|------|----------|------------|
| CM-24VAADR | DRIVER LED DIMM 18W for PANELM04 | 500mA | 18W | 15-20W | 1/60 |
| CM-40VADDR | DRIVER LED DIMM 36W for PANEL17-20, PANELM01- 02 | 850mA | 36W | 25-35.7W | 1/50 |
| CM-60VATDR | DRIVER LED DIMM 60W for PANELM03 | 1500mA | 60W | 45-63W | 1/50 |

PANEL SUSPENSION KIT

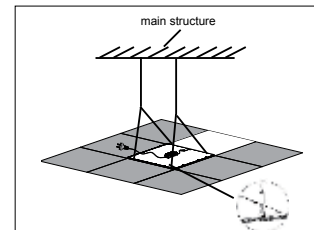


PANELSPKIT

Suitable for panel lights (Instruction sheet included in packaging)



1. T-bar ceiling



2. T-bar ceiling Recessed

PANEL FRAMES (PANELFR)



PANELFR1

595x595x50mm ALUMINIUM SURFACE MOUNTED FRAME TO SUIT PANELM01
(Instruction sheet included in packaging)

PANELFR3

595x1195x50mm ALUMINIUM SURFACE MOUNTED FRAME TO SUIT PANELM03
(Instruction sheet included in packaging)



PANELFR2

1195x295x50mm ALUMINIUM SURFACE MOUNTED FRAME TO SUIT PANELM02
(Instruction sheet included in packaging)

PANELFR4

595x295x50mm ALUMINIUM SURFACE MOUNTED FRAME TO SUIT PANELM04
(Instruction sheet included in packaging)

NB: Frames need to be put together before installation.